

# Gretajean Lind E-CRANE

SPUD BARGE / MATERIAL HANDLER MH12264-PD-E



## SPECIFICATIONS:

**VESSEL NAME:** GRETAJEAN LIND, Official Number 284072 - This machine is the first of its kind on the West Coast.

**DIMENSIONS:** 112' x 52' x 9.4'

**WEIGHT :** 501 Gross Tons

**GENERAL DESCRIPTION:**

Builder: Gunderson Built in 1960

Hull #9604

Built in 2013

EPA Tier 3 compliant engine and is fully registered with the California Air Resources board.

Spud Barge with Pedestal Mounted E-Crane

(Qty: 2) 36" x 34" x 90' Spuds

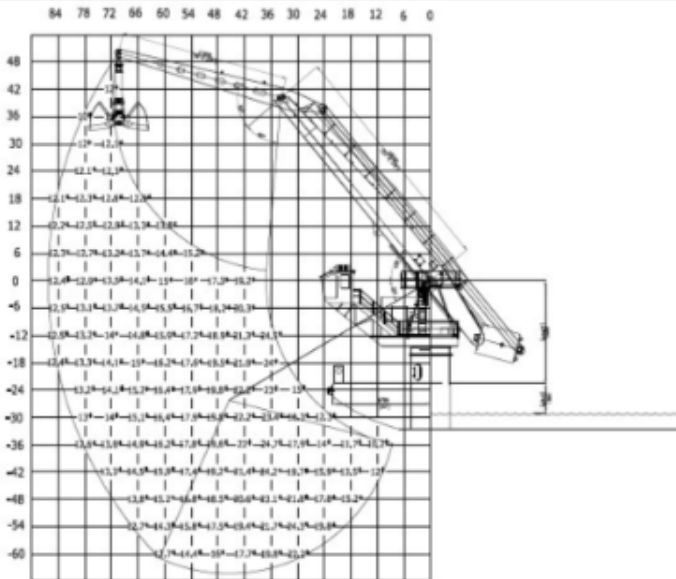
8 c/y Clamshell Bucket

7.75 c/y Level Cut Environmental Bucket

# Gretajean E-CRANE

**SPUD BARGE / MATERIAL HANDLER MH12264-PD-E**

IN 2013, LMI Built the D/B Gretajean for the material re-handling and contaminated dredging market, the machine was built with this purpose in mind. Unique features include a walking counter weight, three 36" heavy wall spuds and dredging specific stick section. This machine is the first of its kind on the West Coast.



**Manufacturer** E-Crane

**Model** 1250 MH

**Lifting Capacity** 40,000 Lbs @ 60 ft.

**Max Digging Depth** 50'

**Max Loading Height** 65'

**Max Loading Reach for Bow** 55'

**Max Loading reach over side** 50'

**Max Lifting Capacity** 22 Tons

**Max Lifting Capacity at max reach** 13 Tons

**Engine** 350 KW Tier 3 Generator

**Fuel Capacity** 7500 USG

**Attachments:** 8 CY Re-handle Bucket  
Grapple  
7.6 CY Environmental Level Cut  
Off Loading Conveyor  
4 Point Anchor Winch

**Class:** ABS Inland – **Spuds:** (Qty: 2) 80' x 36" Heavy Wall